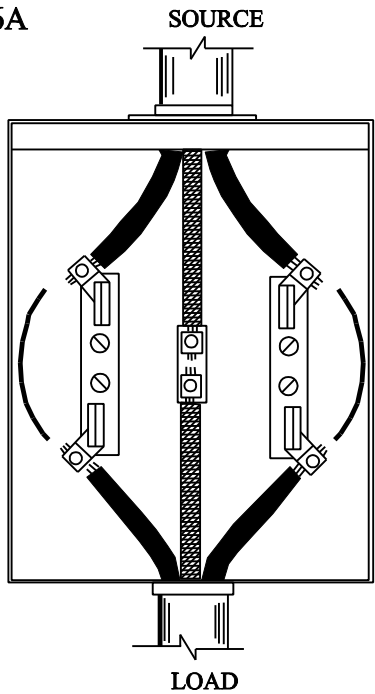


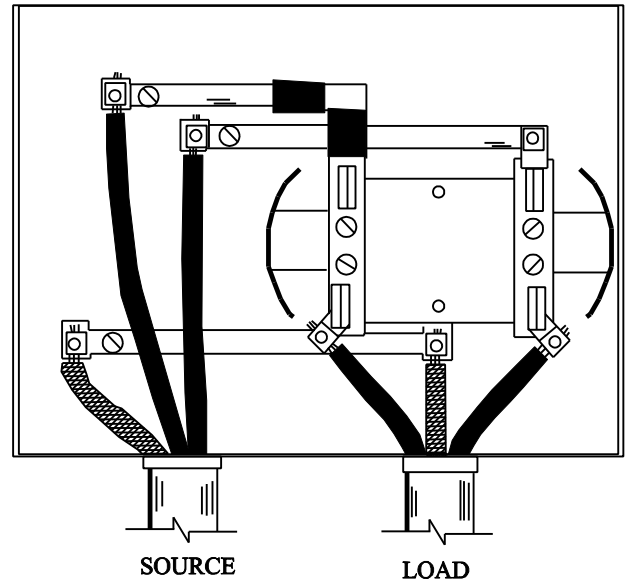
**PERMANENT SERVICE-SOCKET WIRINGS**

**FIGURE 6A**



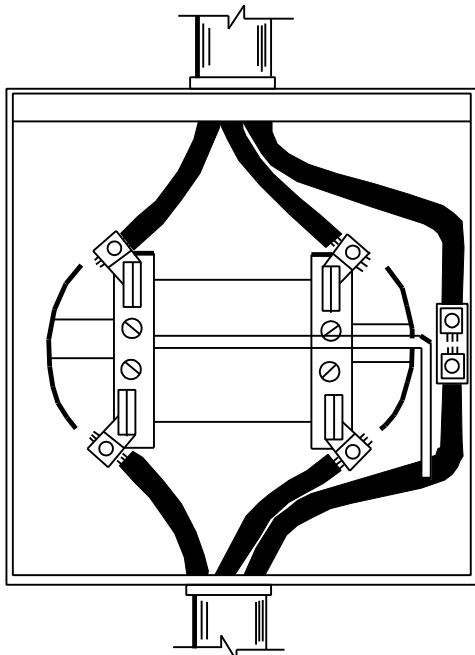
Single Phase, 200 amp, 3-wire, meter socket for overhead residential service.

Use Milbank\*, U7040-RL ringless socket OR compatible.



Single Phase, 200 amp, 3-wire, meter socket for underground residential service.

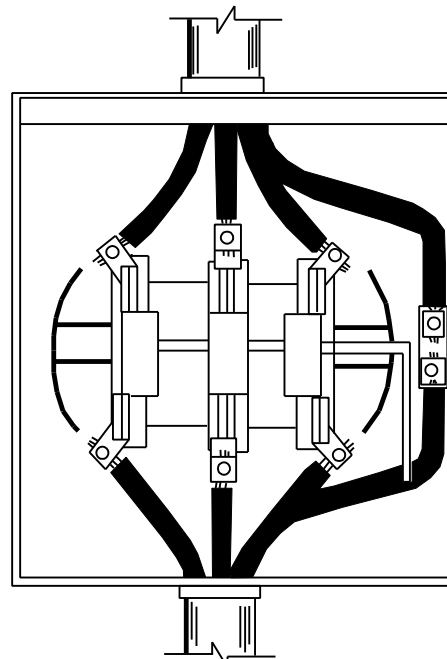
Use Milbank\*, U2569-O ringless socket OR compatible for new construction, U1980-O for conversions.



Single Phase, 120/240V, 3-wire for overhead and underground commercial installations.

Use Milbank\*, U9319-XL OR compatible.

Lever type bypass handle with jaw tension release.



Three Phase, 120/208V, 4-wire Y, for overhead and underground commercial installations.

Use Milbank\*, U7423-RXL or compatible.

Lever type bypass handle with jaw tension release.

**NOTES:**

1. For metering installation requiring CT's see figure 8.